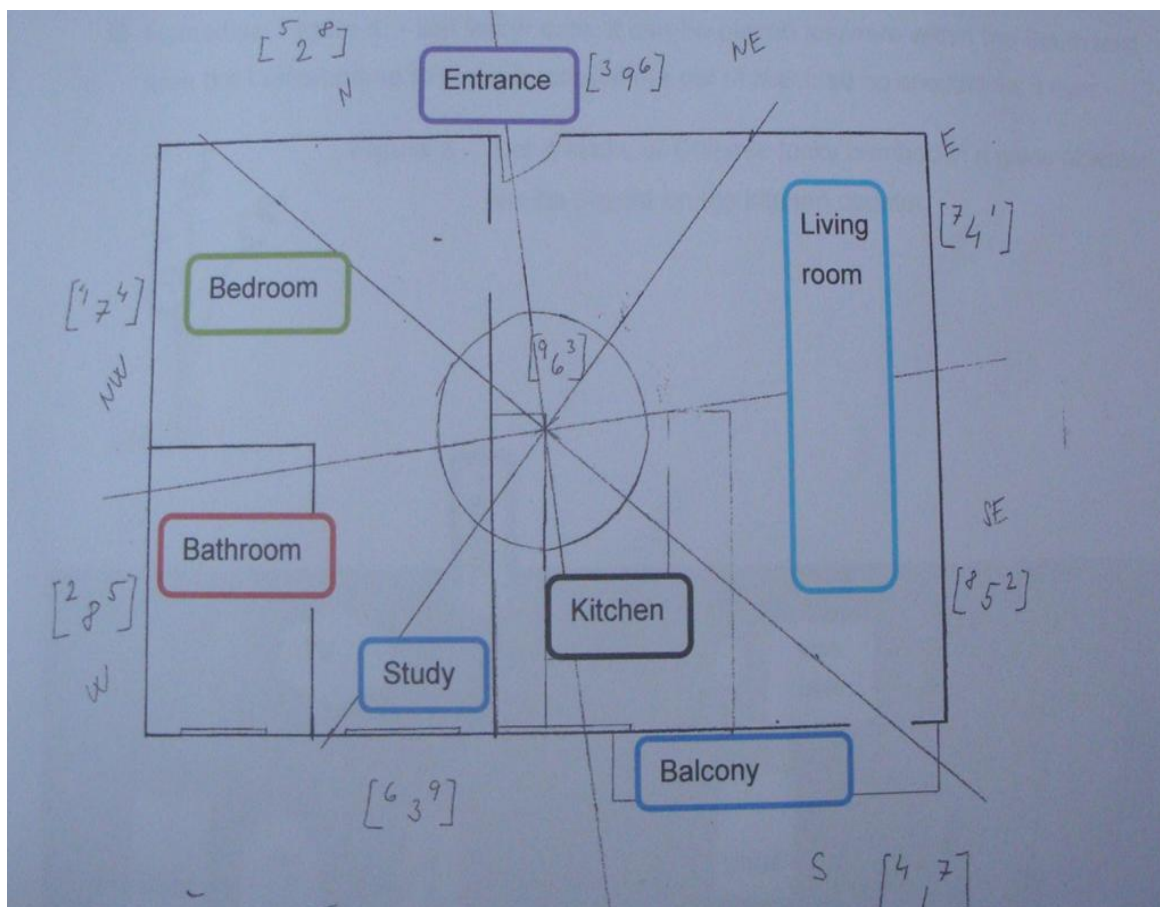




## Option 1. Draw it yourself

We sketched this particular floor plan to scale by measuring each wall of the whole property. This option is great if you are renting and do not want to invest into a professional floor plan. Remember it must be done to a scale.





## Option 2. Let an architect or an engineer sketch one for you

This may cost you a little money but you know it will be more accurate. You can also use it for future renovation plans or home improvements.

